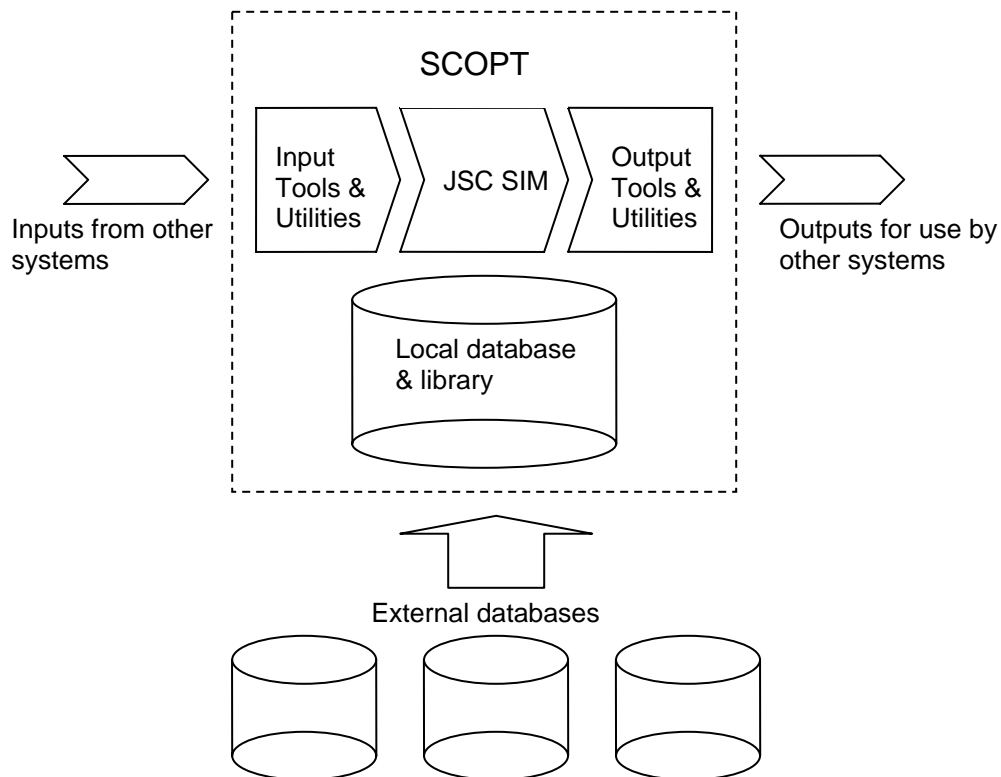


**CLS Inc has been awarded a 20 month contract to develop its Coupling Bridge Analysis Tool (COBRAT) to prototype a Supply Chain Operational Planning Tool for the UK MOD.**

This UK MOD has contracted the development of a Supply Chain Operational Planning Tool (SCOPT) with CLS Inc. The contract valued at \$600,000 is due for delivery in Jul 2007 and is additional follow-on development from ongoing work to develop a Coupling Bridge Analysis Tool (COBRAT). The new project is titled COBRAT+. The requirement for a SCOPT was generated from the Improved Supply Chain Planning for Operation (ISPO) work conducted by the Defence Logistics Transformation Programme (DLTP). Fundamentally, the purpose of SCOPT is to provide a Decision Support Tool (DST) to better inform the Joint Supply Chain (JSC) Planning Process. SCOPT will require to be comprised of a suite of dynamically linked tools and utilities and at its core, a wargaming simulation engine.

*Figure 2 - SCOPT: Construct and Context*



***SCOPT is required to conduct detailed rehearsals of the JSC plans for specific operations by supporting the business processes and management information; in order to allow users to optimise the JSC configuration. SCOPT shall primarily enable the users to identify “pinch points in the JSC configuration to allow its optimization. In addition, it shall be able to predict the characteristics of the optimised configuration, which shall include but not limited to its performance and risks against that performance.***

SCOPT outputs are to be used principally by military Grade 1 and 2 staff officers performing operational planning roles in the Permanent Joint Headquarters (PJHQ) and the Defence Logistics Operational Centre (DLOC), and other operational planners and policy staff as necessary with the minimum of training.

## KEY FUNCTIONALITIES OF THE REQUIREMENT

Some proposed functionalities of the SCOPT are highlighted below:

### Rapid Generation of JFET/JDOA from UK Armed Forces (UKAF) ORBAT.

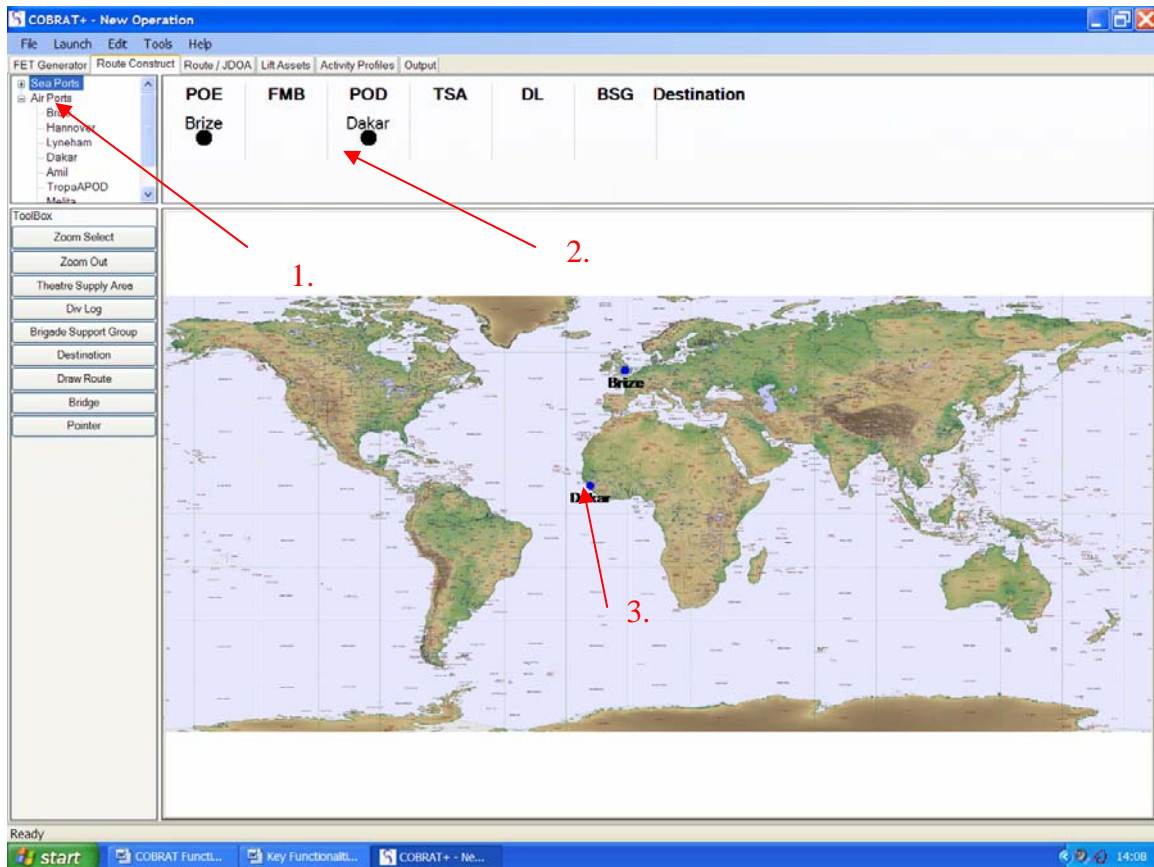
A system whereby the user can select required units from the resident generic library of the UKAF to build a representational JFET with which to work in the immediate planning process.

The screenshot shows the COBRAT+ software interface. On the left, there is a tree view under 'Campaign' with various unit categories like '2ndLine', '3rdLine', 'ArmdMech', 'Cdo', 'Inf', 'MWCAP', 'SF', 'Support', and 'STRIKE'. Below this is a 'Campaign' list showing selected units: '2\_RM\_Cdo\_Close\_Combat\_Coy\_A', '2\_RM\_Cdo\_Close\_Combat\_Coy\_B', '2\_RM\_Cdo\_HQ\_Coy', '2\_RM\_Cdo\_Manoeuvre\_Sp\_Coy\_A', and '2\_RM\_Cdo\_Manoeuvre\_Sp\_Coy\_B'. A red arrow labeled '1.' points to the tree view, and another labeled '2.' points to the Campaign list. The main area is a table titled 'Campaign' with columns: Subdivided, Unit, LIMs, Outsize LIMs, Alest, Pax, 2T, Truck, and Apache. The table contains five rows of unit data and a 'Totals' row. A red arrow labeled '3.' points to the 'Totals' row. The 'Totals' row shows: Subdivided: N, Unit: 2\_RM\_Cdo\_Manoeuvre\_Sp\_Coy\_B, LIMs: 76.6, Outsize LIMs: 0, Alest: 8, Pax: 100, 2T: 2, Truck: 2, Apache: 2. The bottom bar shows 'Accept Changes', 'C130/A400', 'C130', 'A400', 'C17 Loads', 'C130 Loads', and 'Calculate Loads' buttons.

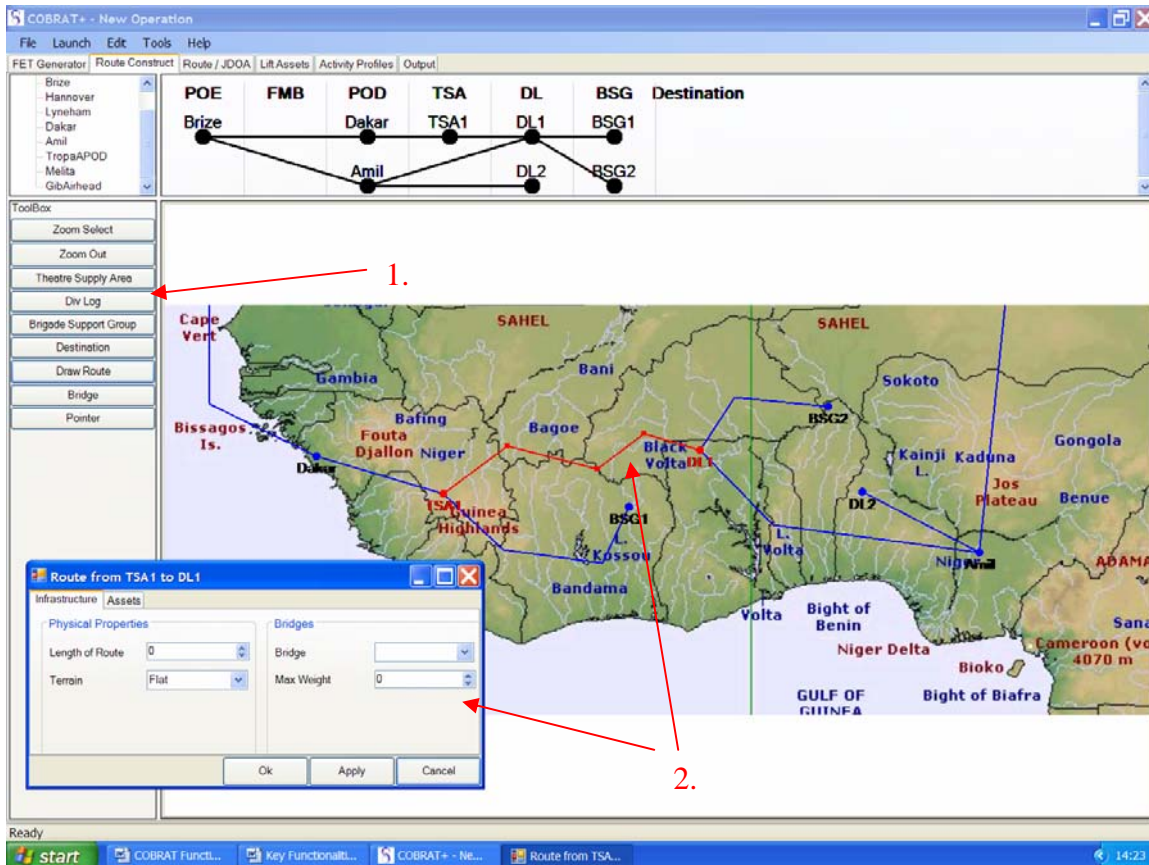
Subdivided	Unit	LIMs	Outsize LIMs	Alest	Pax	2T	Truck	Apache
Use Defaults	2_RM_Cdo_Close_Combat_Coy_A	76.6	0	8	100	2	2	2
Use Defaults	2_RM_Cdo_Close_Combat_Coy_B	76.6	0	8	100	2	2	2
Use Defaults	2_RM_Cdo_HQ_Coy	76.6	0	8	100	2	2	2
Use Defaults	2_RM_Cdo_Manoeuvre_Sp_Coy_A	76.6	0	8	100	2	2	2
Use Defaults	2_RM_Cdo_Manoeuvre_Sp_Coy_B	76.6	0	8	100	2	2	2
	<b>Totals:</b>	<b>383</b>	<b>0</b>	<b>40</b>	<b>500</b>	<b>10</b>	<b>10</b>	<b>10</b>

1. Generic ORBAT of UKAF.
2. Units selected for the JFET.
3. Selected units' construct. Total summations from the selection are shown in the bottom bar.

## Accurate Construct of the Proposed JSC

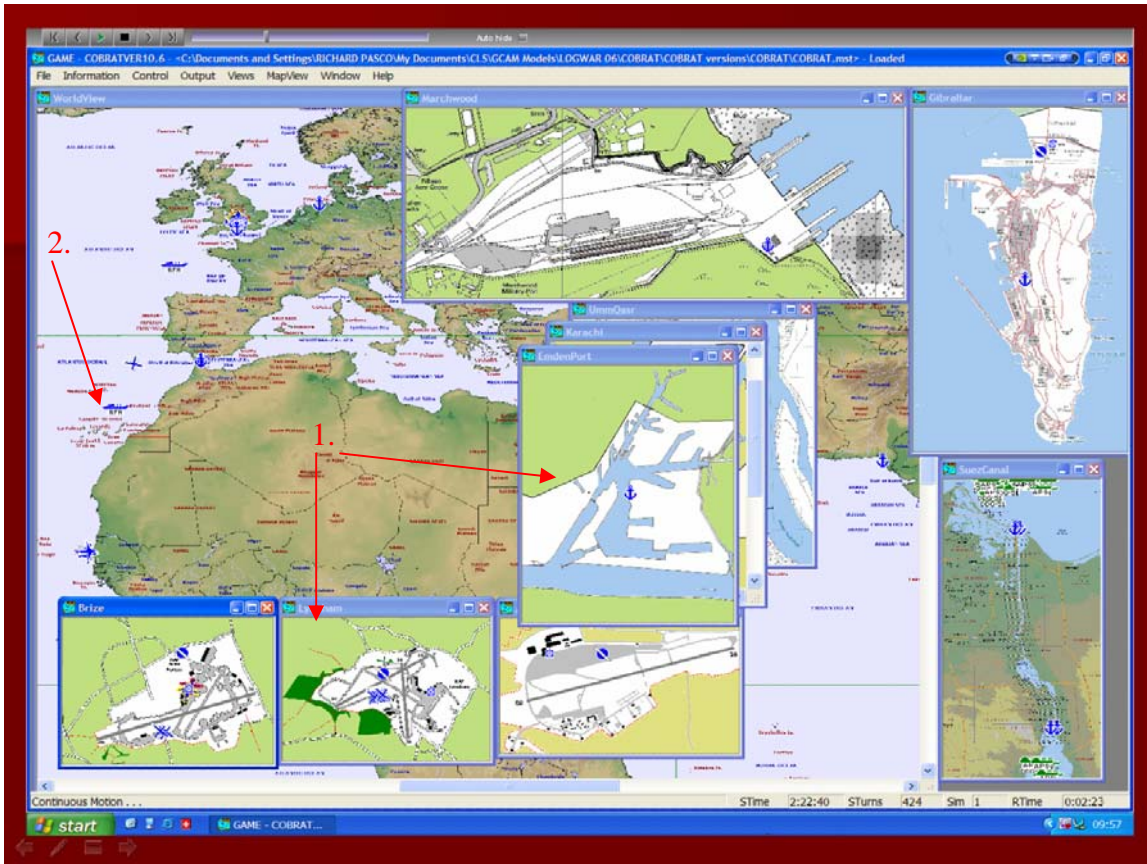


1. Library of known Airports and Seaports from which the user can select.
2. Airheads and Seaports selections are made.
3. The selected Airheads and Seaports appear on the interactive map.



1. In-theatre logistic nodes and supply routes can also be constructed using the tool bar.
2. Precise route definitions can be made.

## COA Evaluation (Wargaming Simulation)



1. Windows of each Seaport and Airhead included in the JSC construct
2. Each individual lift asset and equipment traceable throughout the JSC simulation.